



Arri Alexa Rec709



Panavision DXL2



Technicolor Cinestyle



AP-2-Strip Process



AP-Acamar



AP-Achernar



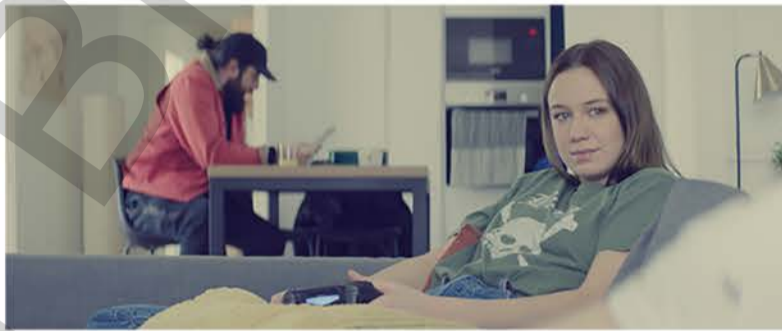
AP-Achrid



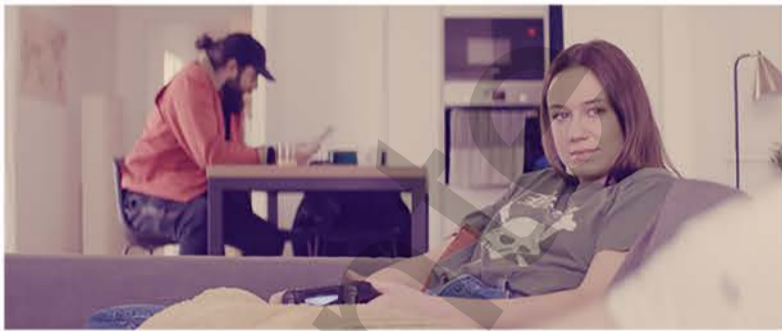
AP-Acrab



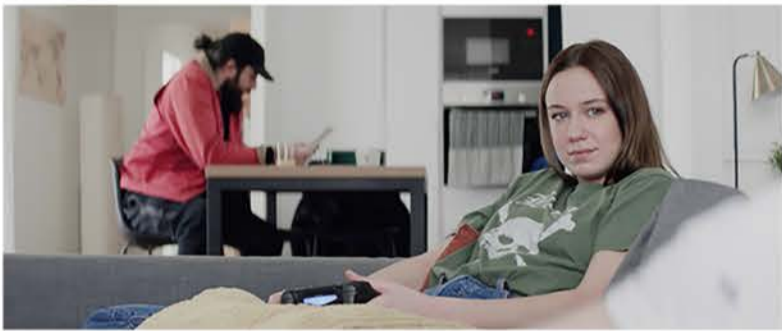
AP-Acrux



AP-Acubens



AP-Adhara



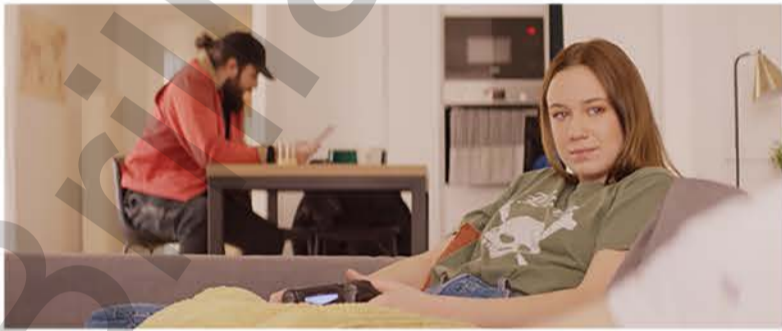
AP-Adhil



AP-Alamak



AP-Alaraph



AP-Albireo.jpg



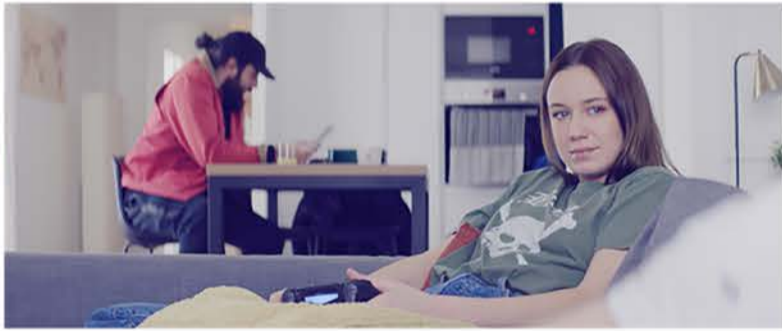
AP-Alchiba



AP-Alcor



AP-Alcyone



AP-Aldib



BW-Bactor



BW-Baham



BW-Beid



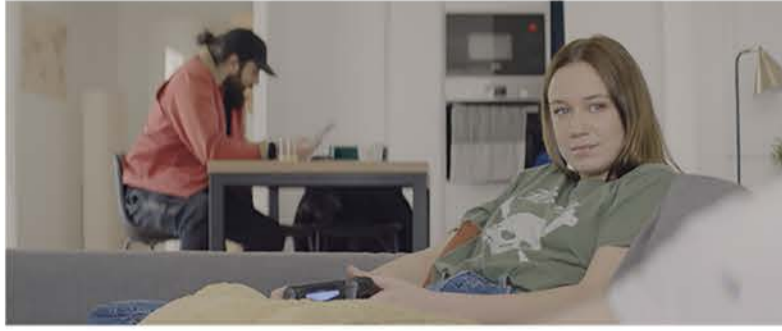
BW-Belium



CBG-Dabit



CBG-Dectra



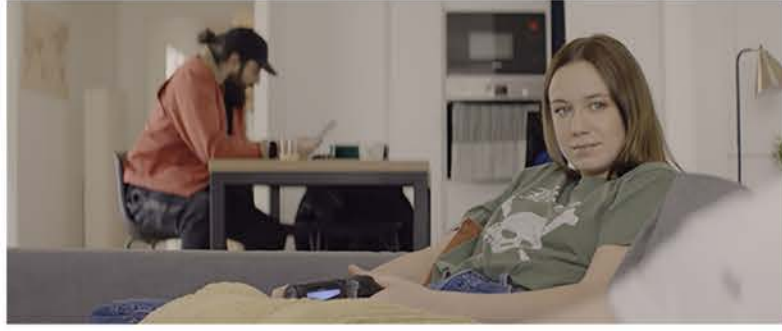
CBG-Delnath



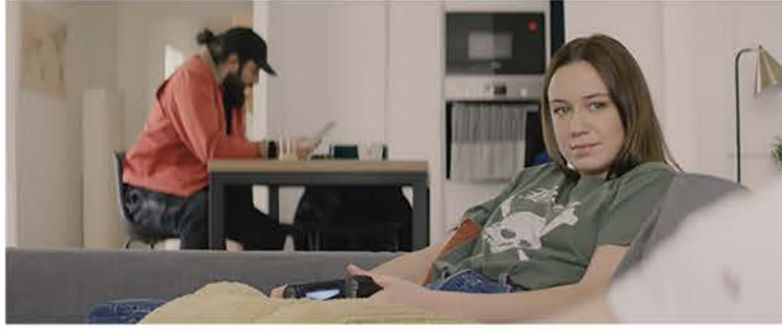
CBG-Delphinus



CBG-Deneb



CBG-Derrai



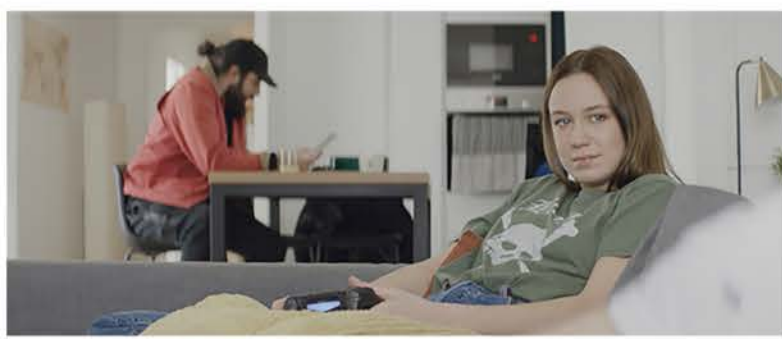
CBG-Diadem



CBG-Diadex



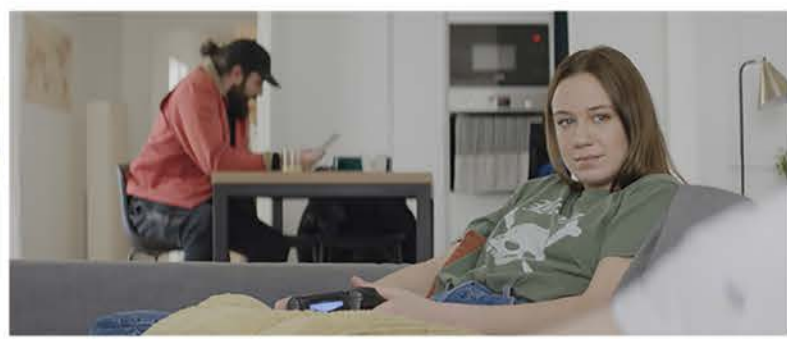
CBG-Diphda



CBG-Dnoces



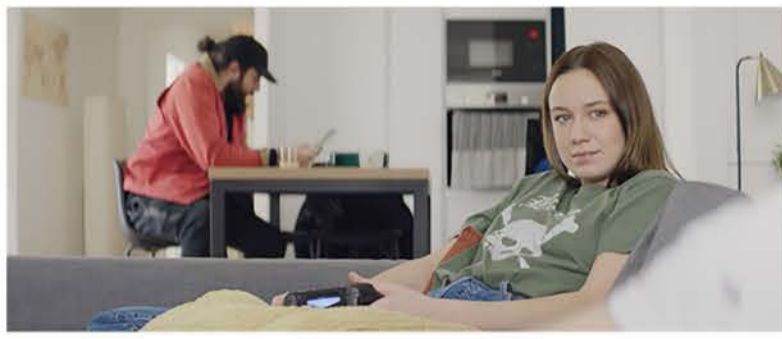
CBG-Dornier



CBG-Dubhe



CBG-Dur



CCF-Hadar



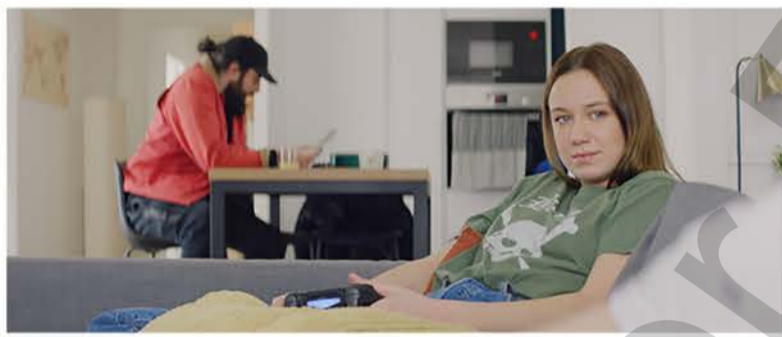
CCF-Haedus



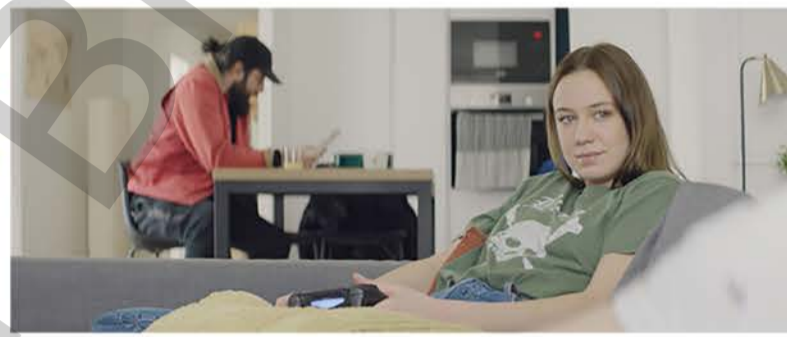
CCF-Halcor



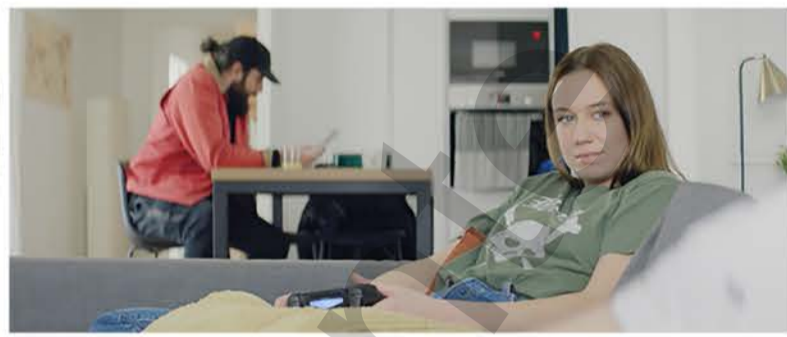
CCF-Haldus



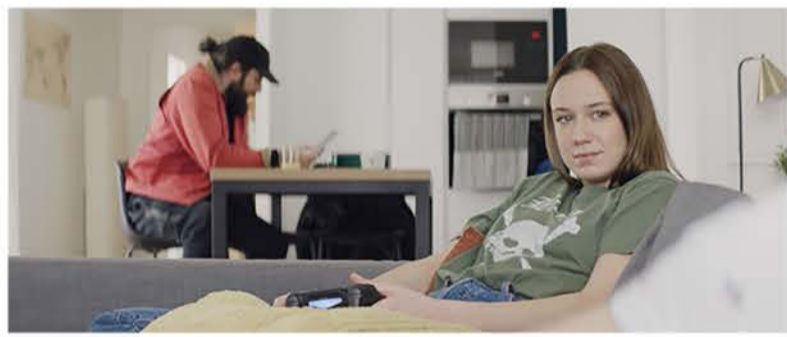
CCF-Haskela



CCF-Hassel



CCF-Hasterion



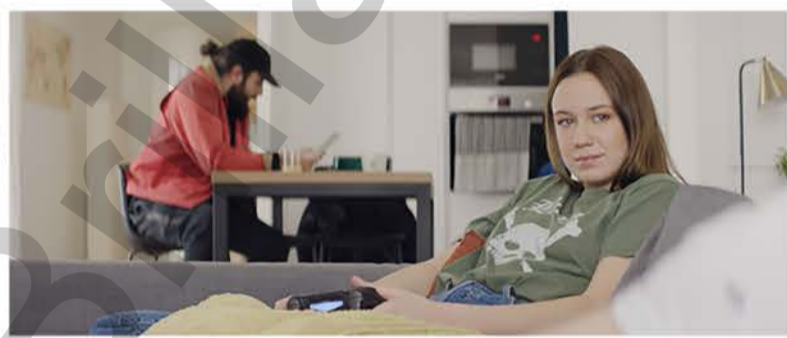
CCF-Heka



CCF-Helano



CCF-Heltic



CCF-Helvetios



CCF-Heonis



CCF-Hersei



CCF-Hessex



CCF-Heze



CCF-Hizar



CCF-Hoedus



CCF-Homam



CCF-Hyadum



CCF-Hydra



CCF-Hydrae



CCF-Hydri



CCF-Hydrobius



CCF-Hydrus



CL-Caurus



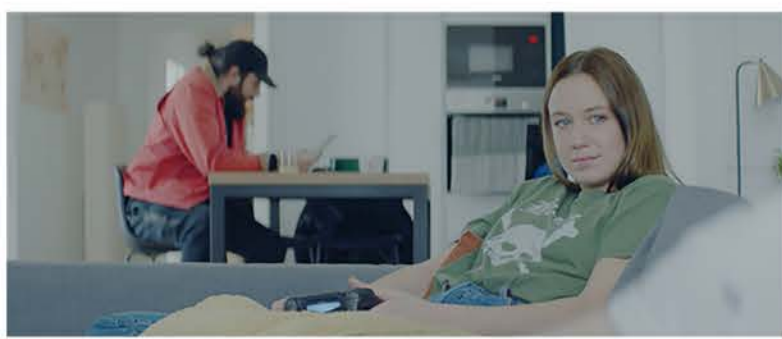
CL-Celaeno



CL-Copernicus



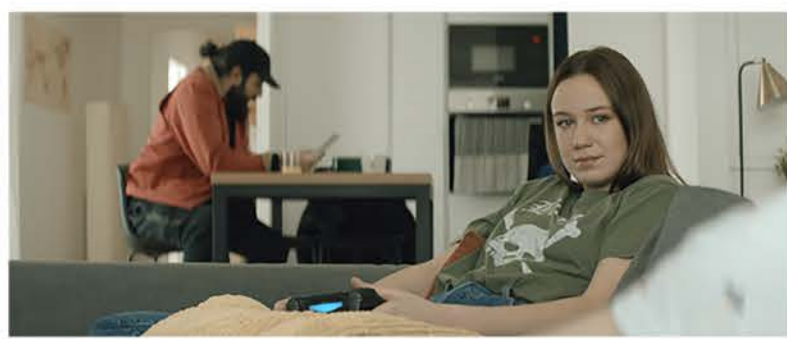
CL-Cor



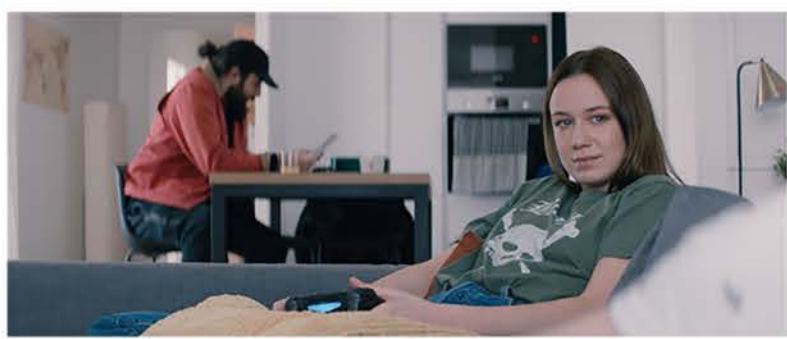
CL-Cursa



Fuji Pro 400



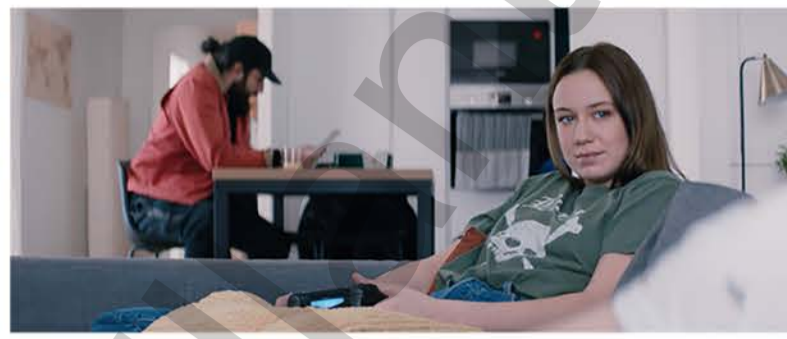
Fuji Superior 200



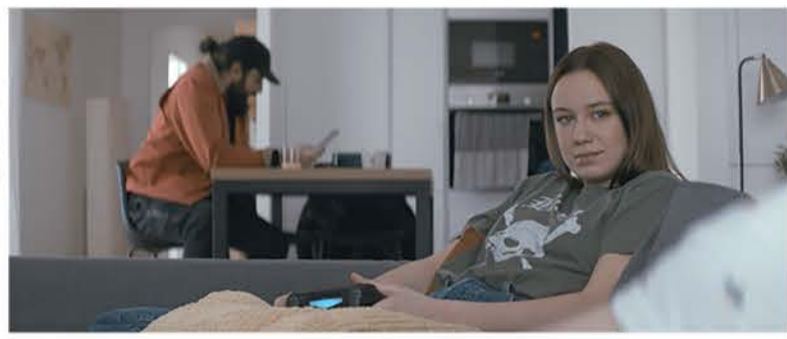
Fuji 3514 Medium Contrast



Fuji 3521 Medium Contrast



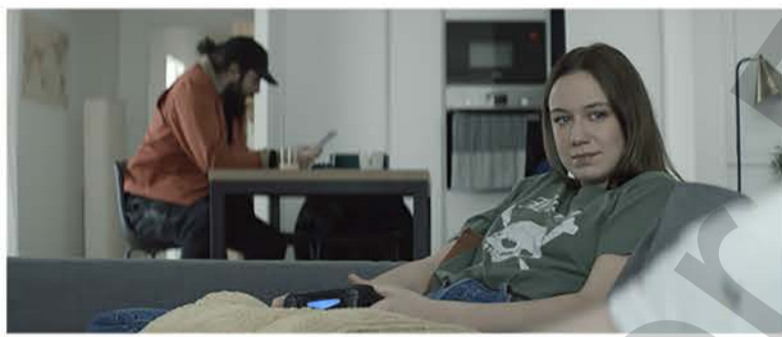
Fuji 3523 Medium Contrast



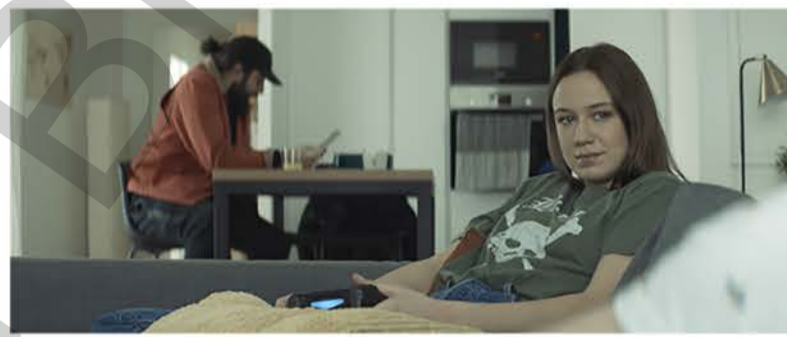
FujiColor 200



IF-Giedi



Kodak Ektar 100



Kodak Elite Chrome 200



Kodak Elite Color 200



Kodak Gold Gen.6 200



Kodak Ultramax 400



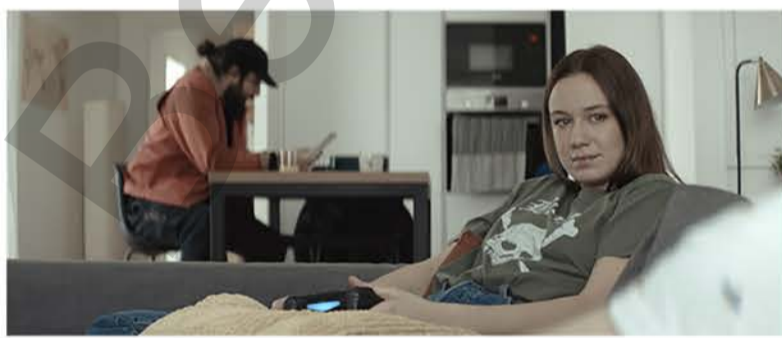
Kodak Vis3 200T 5213 (NEG)



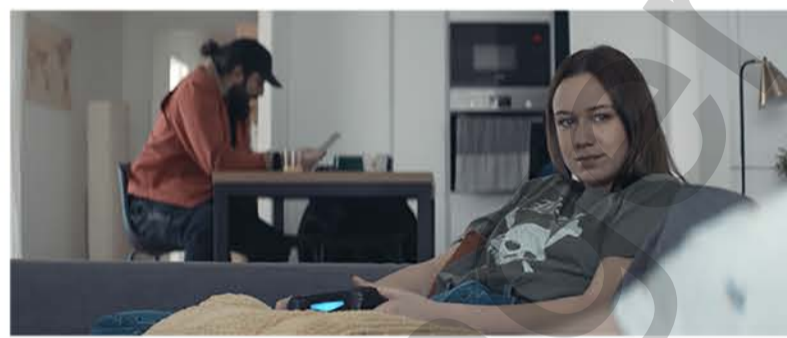
Kodak Vis3 250D 5207 (NEG)



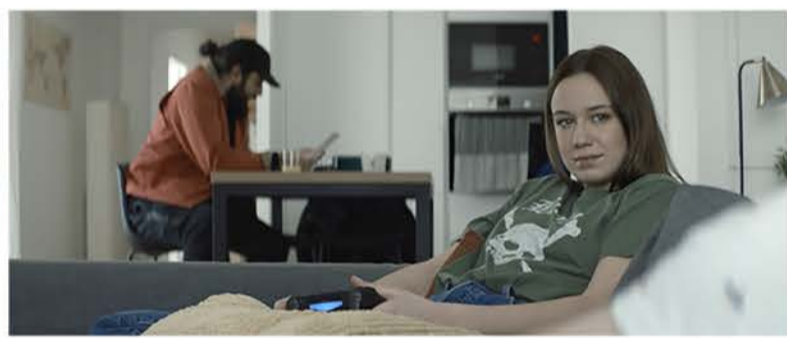
Kodak Vis3 500T 5219 (C41)



Kodak Vis3 500T 5219 (NEG)



Kodak Vis3 50D 5203 (DP)



Kodak Vis3 50D 5203 (NEG)



Kodak 2302 Medium Contrast



Kodak 2383 Medium Contrast



Kodak 2393 Medium Contrast



Kodak Vision 4



Kodak Vision 6



Kodak Vision X



Koji LogC > Rec709 2383



Koji LogC > Rec709 2393



Koji LogC > Rec709 3514



Koji LogC > Rec709 3521



Koji LogC > Rec709 3523



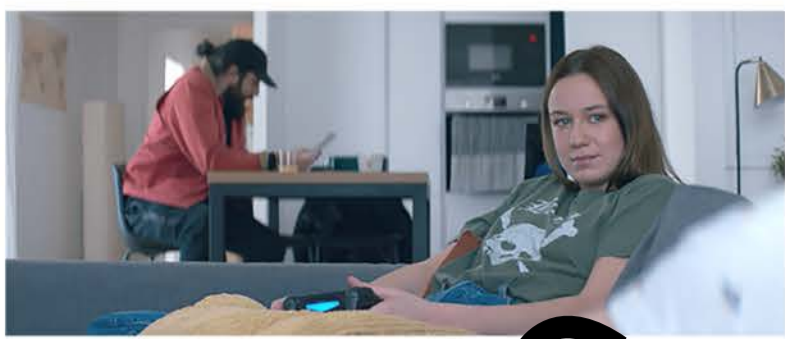
Koji DLog > Rec709 2383



Koji DLog > Rec709 2393



.RNR5HF



.RNR5HF



.RNR5HF



.RNR5HF



RP R&R0EJ S0VRQ



33MDFKURP H



0%0DFB0QVHU



0%0DF.N0QVP DQ



0&K0UHQRI HQ



0)UHQT&RP HG



0)M0XW



0)UDQ0%XGDSHMA/RVHO



0)XU0ENHU



0)KH\$TXDVE



0)QF0SRQTE HQ-R0ZRRG



0)QF0SRQTE HQ-R0ZRRG



0)EDUR



0)KH-RHU



0)KH-0RWW



0)KH-5HYHQDQW



0)KH-6KDSH-RIDVHU



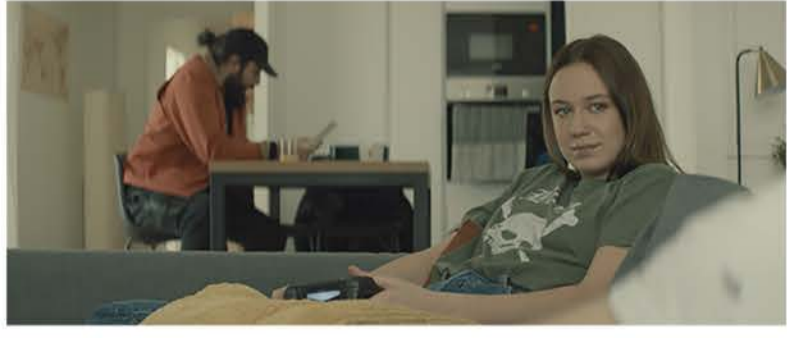
2 656B8*2



2 656B.;



2 656B0



2 656B3560 2



335: *2* *!&,



335: *2* *!&,



33-UK&RQWVADUG



33-UK&RQWVADUGXP



33-UK&RQWVADUG



33-UK&RQWVADUG



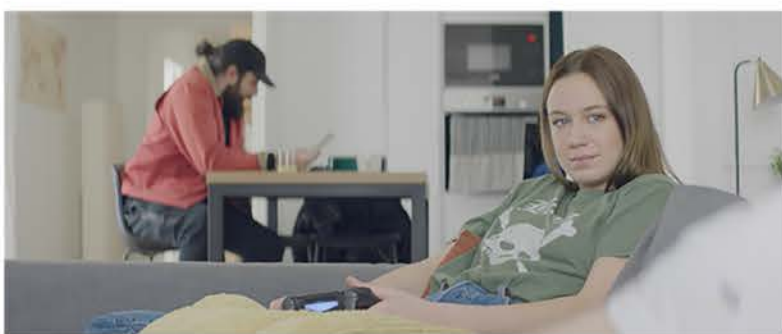
33RZ&RQWVADUG



IPP2 - Low Contrast - Medium



IPP2 - Low Contrast - Soft



IPP2 - Low Contrast - Very Soft



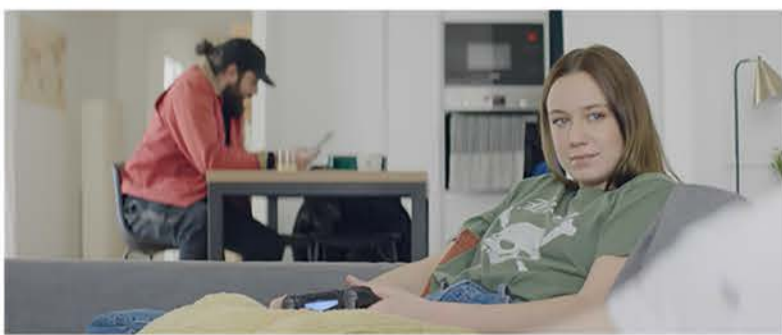
IPP2 - Medium Contrast - Hard



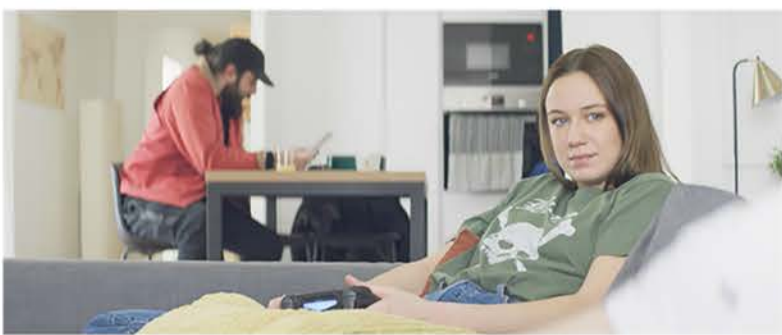
IPP2 - Medium Contrast - Medium



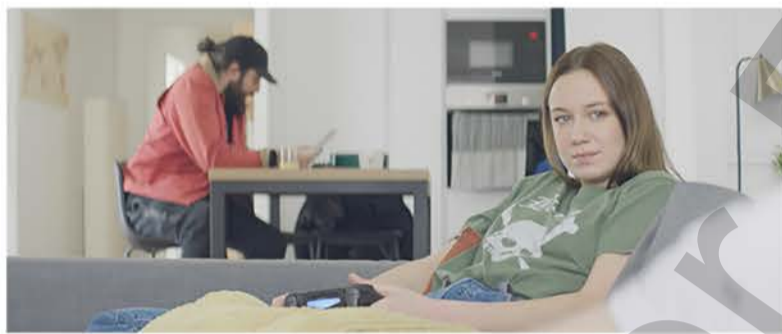
IPP2 - Medium Contrast - Soft



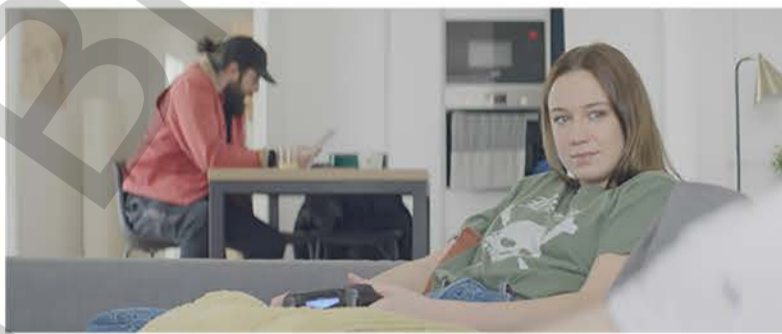
IPP2 - Medium Contrast - Very Soft



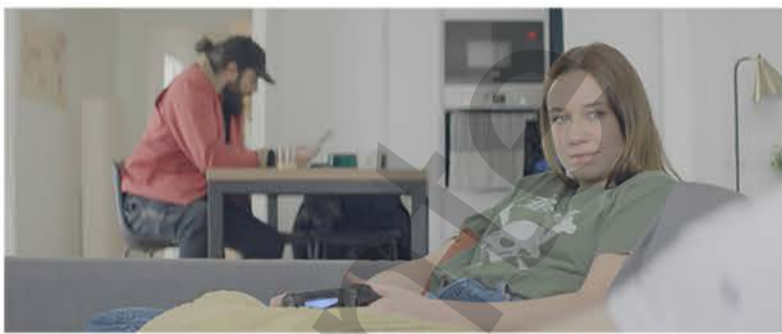
IPP2 - No Contrast - Hard



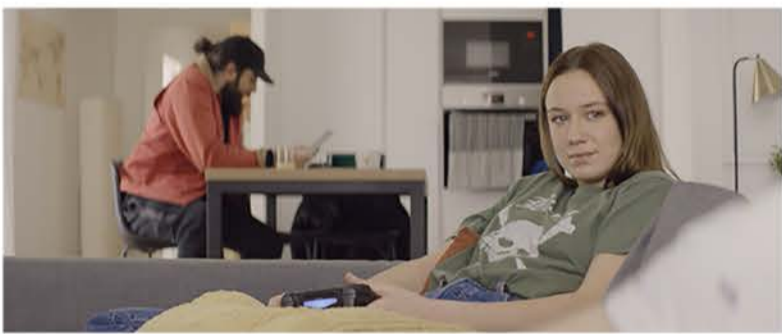
IPP2 - No Contrast - Medium



IPP2 - No Contrast - Soft



IPP2 - No Contrast - Very Soft



STM-Naos



STM-Nutilus



TO-Macrux



TO-Marston



TO-Menkar



TO-Mimosa



TO-Muscida

Pour voir les LUTs Rec709 veuillez cliquer [ici](#).